

Printhead driving board

Scanning application

Model CBPRKJ11E01

for KYOCERA printheads:

KJ4B-0300

KJ4A

Board features

- Easy integration protocol
- SDK documentation
- RJ45 ethernet connection 1Gbit
- 1 driving board to control 2 printheads (4 colors)



Nozzle mapping on board

Data rotation on board

- Grey level
- Single power supply 26V
- Cable length up to 900mm

Printhead supported features

- Printhead maximum frequency (20 and 30 Khz)
- Waveform upload/download
- Temperature control
- Voltages settings
- Diagnostic
- Fire6 (nozzle activation)
- Full features support

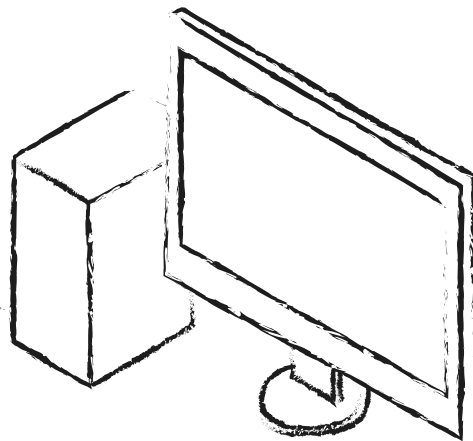
COBAN

COBAN



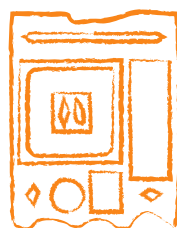
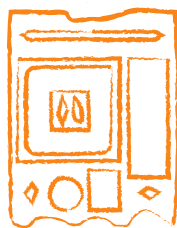
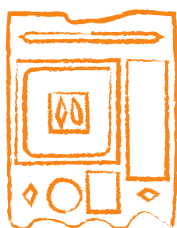
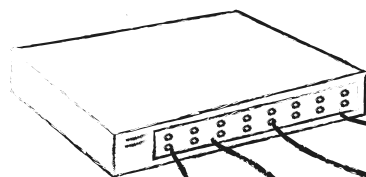
www.coban.it

PC with
printer software



**COBAN
SDK**

switch



**COBAN
driving
boards**



Scanning application

up to 256 boards on a single machine

Coban srl

Via Varese 11
21047 - Saronno (VA) Italy

TELEFONO:
+39 02 96709165

E-MAIL:
info@coban.it