

Printhead driving board

Single pass application

Model CBPRKJ11S01

for KYOCERA printheads:

KJ4B-QA

KJ4A-TA

KJ4A-AA

KJ4B-RH

Board features

- Easy integration protocol
- SDK documentation
- RJ45 ethernet connectio 1 Gbit
- 1 driving board to control 2 printhead
- Nozzle mapping on-board
- Image queue management
- Printing data buffer up to 30 meters
- Change design on the fly
- Grey levels (drop sizes)
- Single power supply 26V
- Ink consumption counting on board
- Live diagnostic
- Easy firmware upgrade

Printhead supported features

- Printhead maximum frequency (20 and 30 KHz)
- Waveform upload/download
- Temperature control
- Voltages settings
- Diagnostic
- Fire 6 (nozzle activation)

COBAN



COBAN

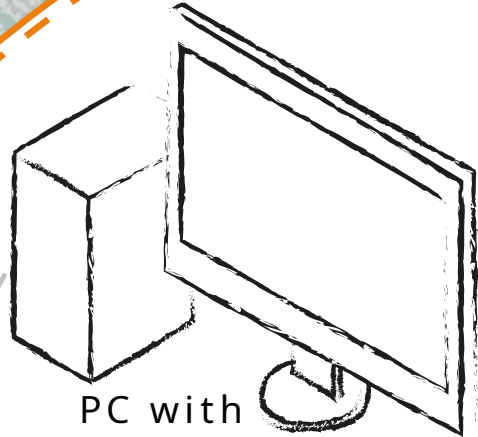


www.coban.it

Single pass application

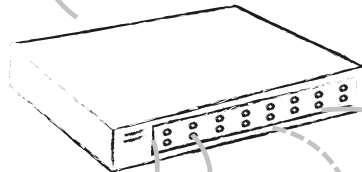
up to 512 boards on a single machine

**COBAN
SDK**



PC with
printer software

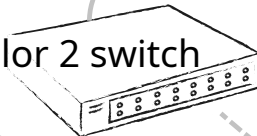
Primary switch



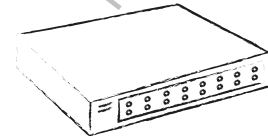
Color 1 switch



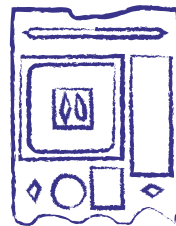
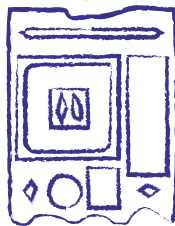
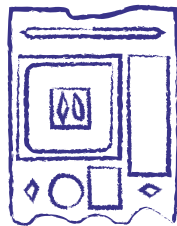
Color 2 switch



Color N switch



**COBAN
driving
boards**



Printheads

Coban srl

Via Varese 11
21047 - Saronno (VA) Italy

TELEFONO:
+39 02 96709165

E-MAIL:
info@coban.it