

# Prinththead driving board

## Scanning application

### Model CBPRKJ23002

for KYOCERA printheads:

**KJ4B-QA**

**KJ4B-RH**

**KJ4A-TA**

**KJ4A-AA**



### Board features

- Daisy chain RJ45
- Easy integration protocol
- SDK documentation
- RJ45 ethernet connection 1Gbit
- 1 driving board to control 2 printheads
- **Nozzle mapping on board**
- **Data rotation on board**
- Grey level (drop sizes)
- Single power supply 24V
- Cable length up to 900mm
- Ink consumption counting on board
- Live diagnostic
- Easy frmware upgrade protocol

### Printhead supported features

- Printhead maximum frequency (20 and 30 Khz)
- Waveform upload/download
- Temperature control
- Voltages settings
- Diagnostic
- Fire6 (nozzle activation)

**COBAN**

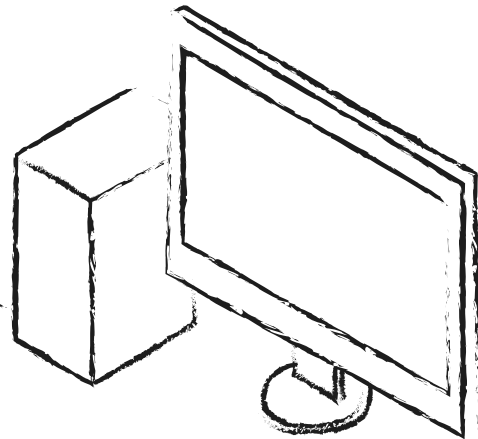


**COBAN**



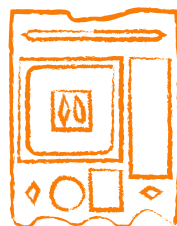
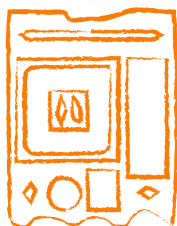
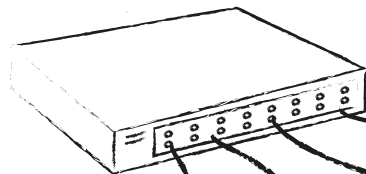
[www.coban.it](http://www.coban.it)

PC with  
printer software



**COBAN  
SDK**

switch



**COBAN  
driving  
boards**



## Scanning application

up to 256 boards on a single machine

**Coban srl**

Via Varese 11  
21047 - Saronno (VA) Italy

TELEFONO:  
+39 02 96709165

E-MAIL:  
[info@coban.it](mailto:info@coban.it)